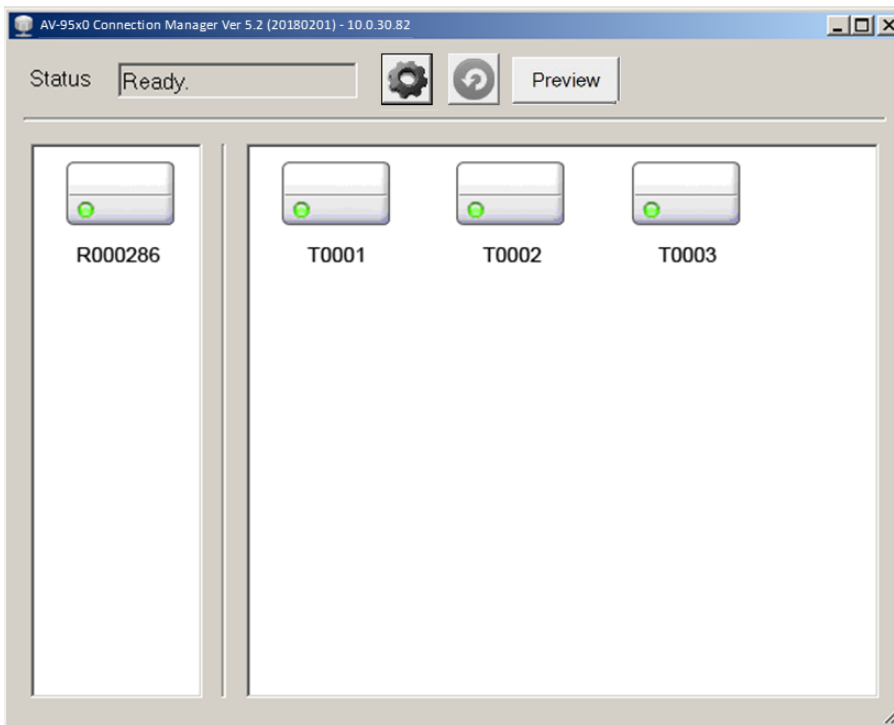


KVM over IP Connection Manager Lite

Introduction

The Connection Manager Lite is a Windows based software for easily make the KVM over IP matrix connection. The software will discover all of Tx/Rx devices and listed on the left/right window as below:

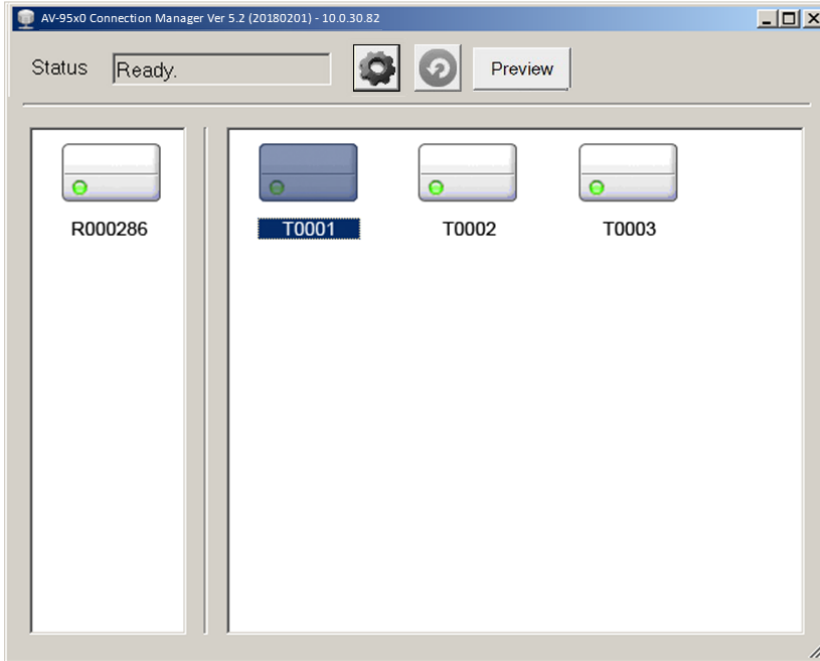


System Requirement for the Connection Manager Lite:

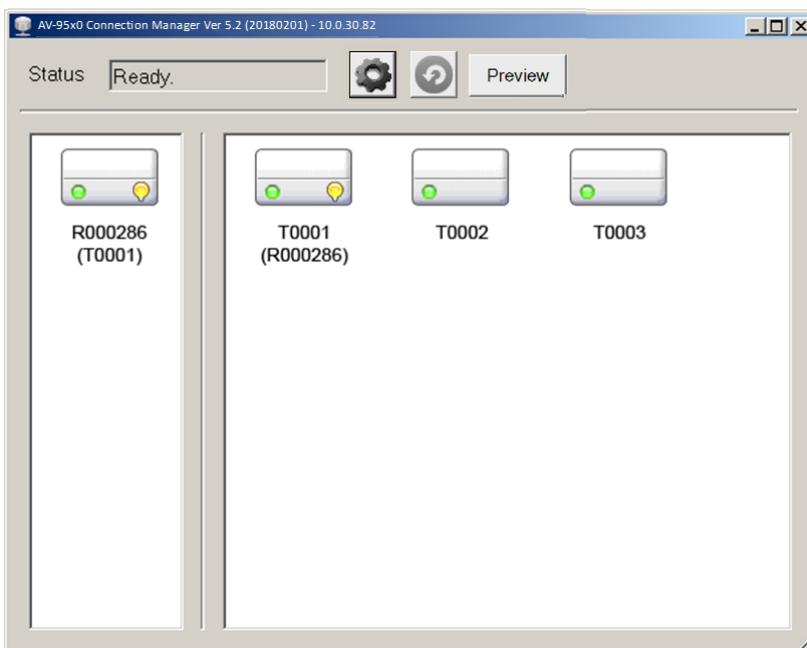
- ★ AV-952x/DV-952x Tx/Rx units.
- ★ A Windows based PC
- ★ Connection Manager Lite software
- ★ Gigabit Ethernet Switch

How to make Tx/Rx connection

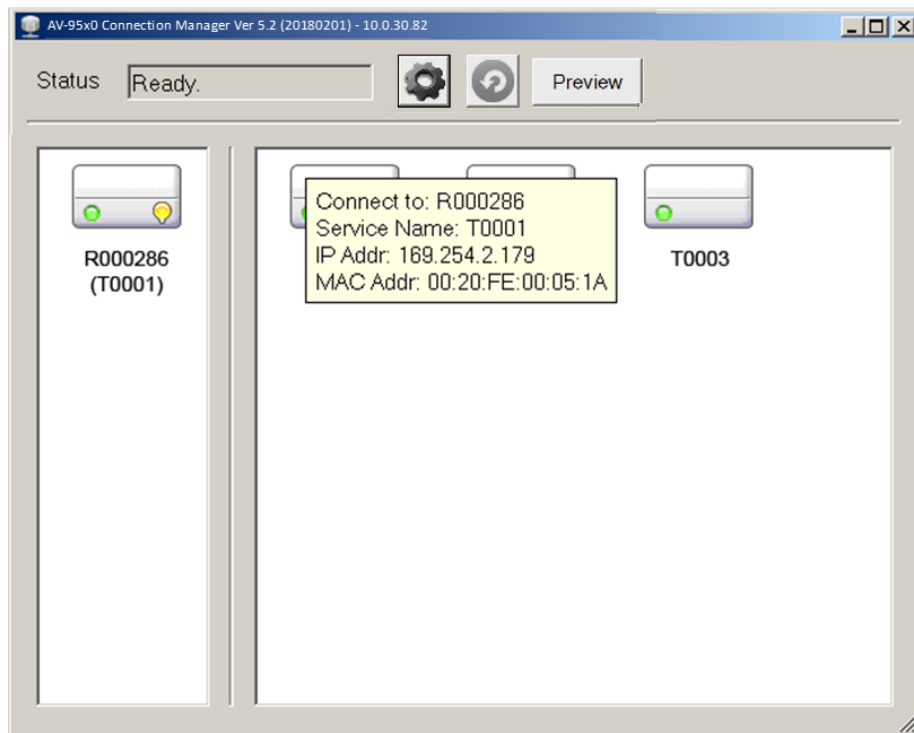
Select Rx then single click to select any TX icon. For example, click the T0001 icon to make connection for R000286 and T0001 as below:



The connection might take couple seconds to be established, an **amber** indicator will be shown on the right-bottom corner of the icon as below R000286 and T0001. The "(T0001)" is shown under the R000286 icon, and the "(R000286)" is shown under the T0001 icon to indicate the connection.



You can see the unit properties of “Connect to”, “Service name”, “IP address”, “MAC address” by the Tool Tip information by moving mouse over the icon. For example, moving mouse over the T0001 icon will show the following Tool Tip information:

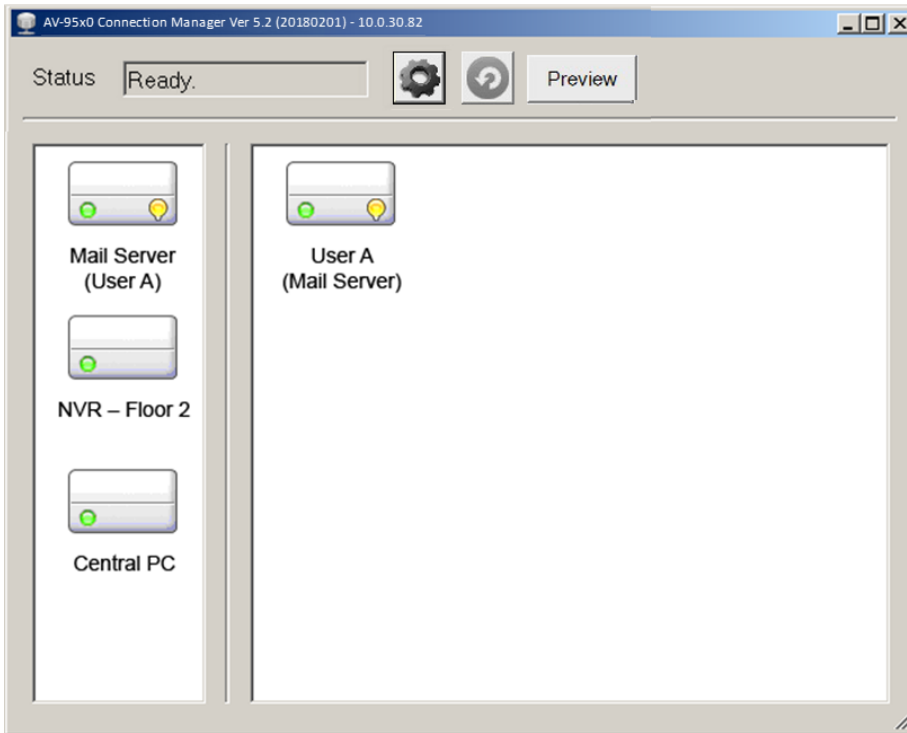


You can operate the software from the Transmitter point of view. Click the Setting button and check the “Transmitter” as below:



The Receivers list is on the left window and the Transmitters list is on the right window if [I am] Preference is “Receiver”. The Transmitters list is

on the left window and the Receivers list is on the right window if [I am] field is “Transmitter” as below diagram:



You can preview Tx screenshot:

