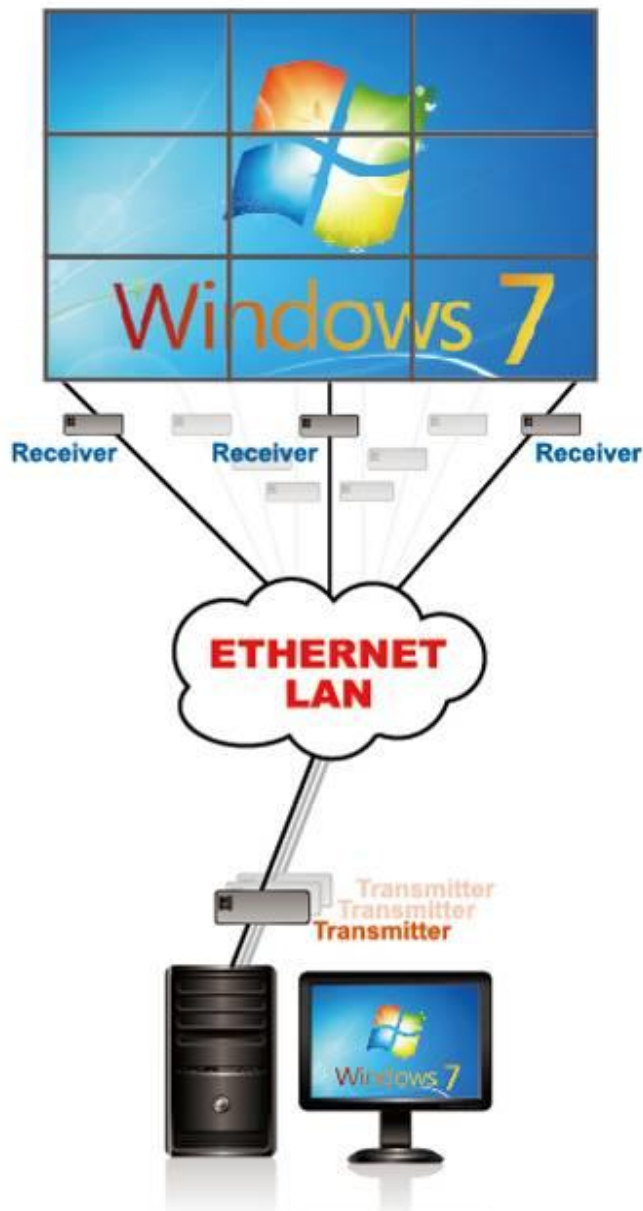


# KVM over IP

## Video-Wall Manager Plus

### Introduction

The Video-Wall Manager Plus is a Windows based software providing configuration and operation for the KVM over IP Video-Wall, including Tx/Rx connections, settings, as well as Operation and Management.



# Configure Rx Video-Wall Web page

The Video-Wall Web page provides Bezel and Gap Compensation, Wall Size and Position Layout settings.

▼ Basic Setup:

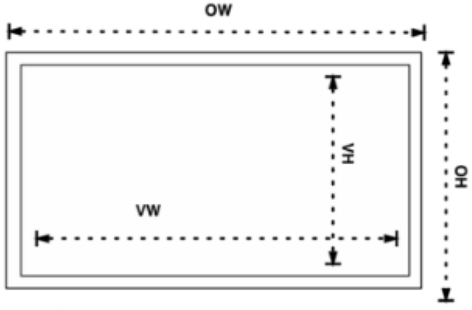
### Bezel and Gap Compensation

OW:

OH:

VW:

VH:



UNIT: 0.1mm

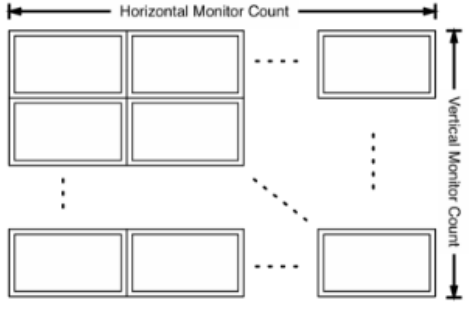
### Wall Size and Position Layout

Vertical Monitor Count:

Horizontal Monitor Count:

Row Position:

Column Position:



UNIT: Panel

### Preferences

Stretch Type:

Clockwise Rotate:

Apply To: "All" device(s) in the list

Show OSD

# Video-Wall Manager Plus Setup (3x3 screen array, served by 4Tx, 9Rx)

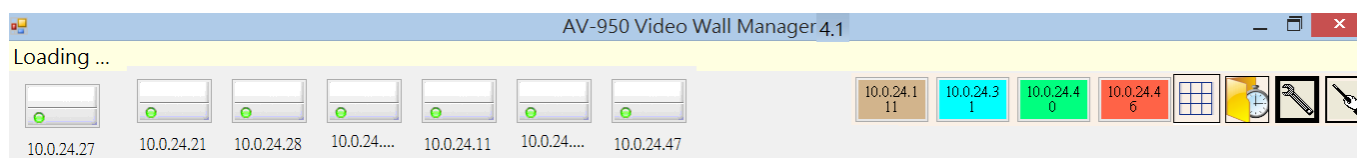


Install the Video-Wall Manager Plus by clicking Setup.exe

Run the Video-Wall Manager Plus

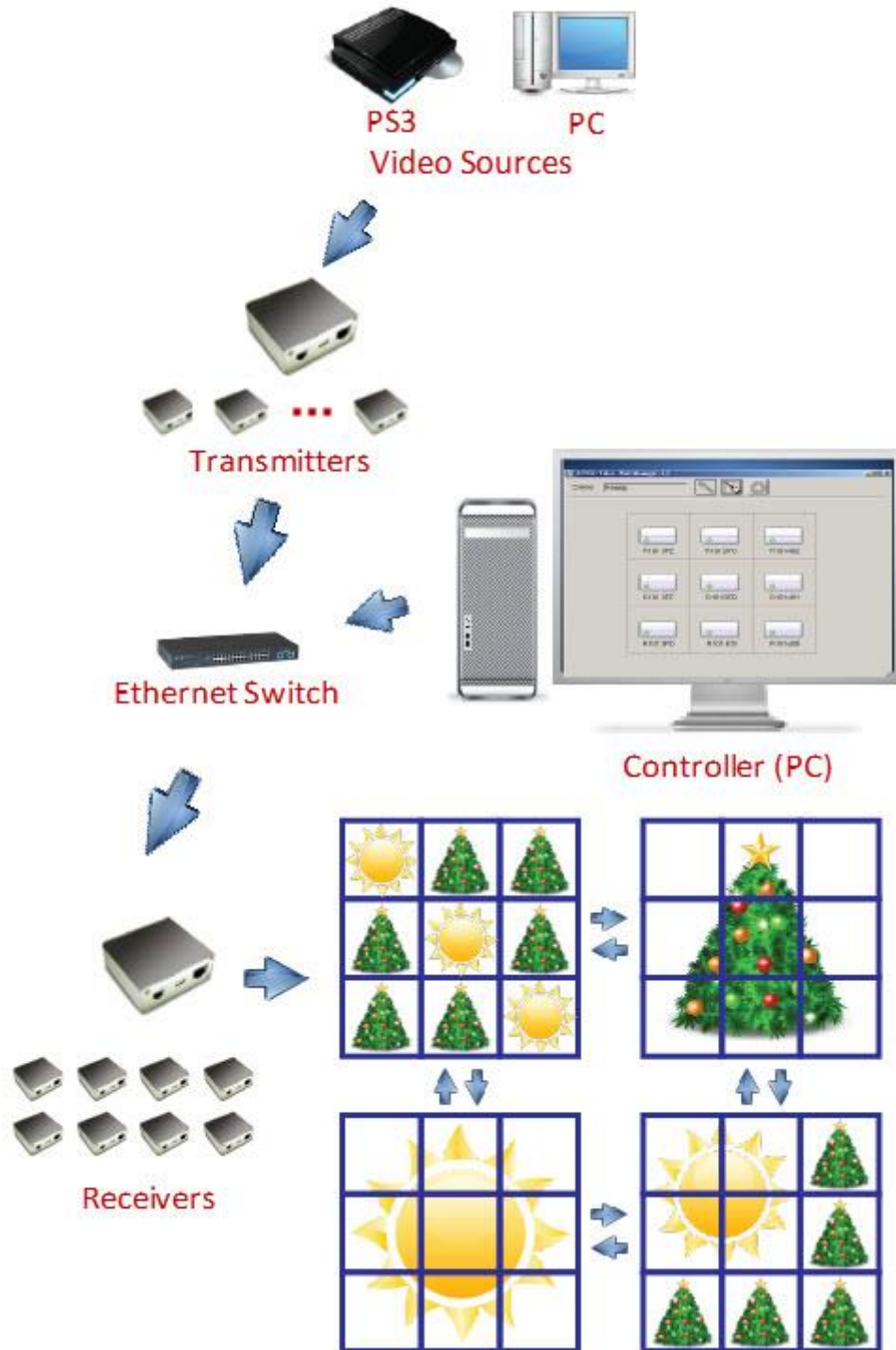
It will search out Tx/Rx units then display the main window.

The icons in white in the main space represent RXs and those in different colors fixed in the right-hand corner represent TXs.





The Rx icon with a green light is an online indicator; if a Rx is off the network, the light turns gray. Tx icons, however, are colored when online, and turn white if the Tx unit goes offline.

# System Diagram

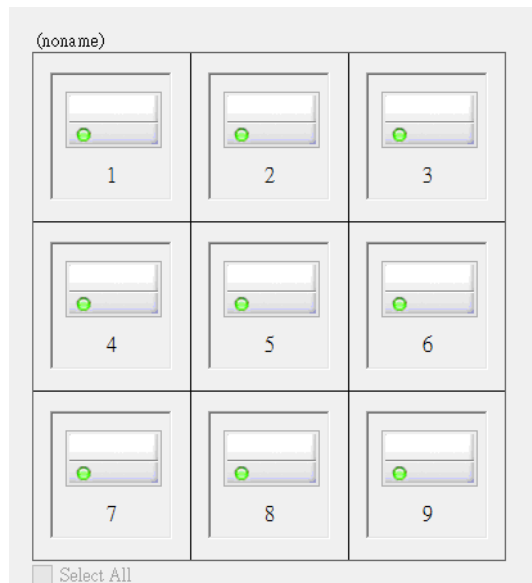
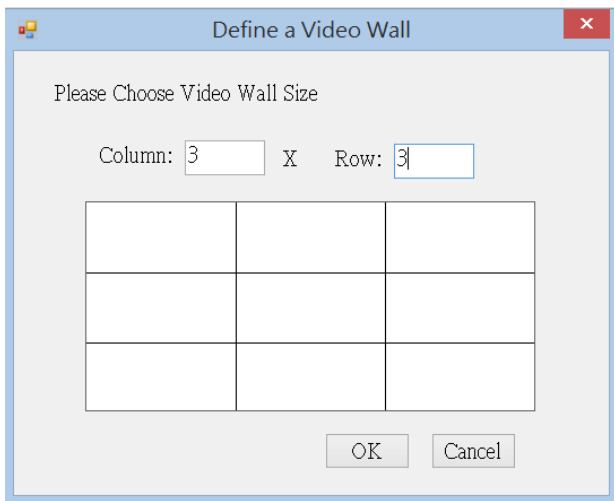


# Create a Video-Wall


To create a 3x3 video-wall, select the wrench icon

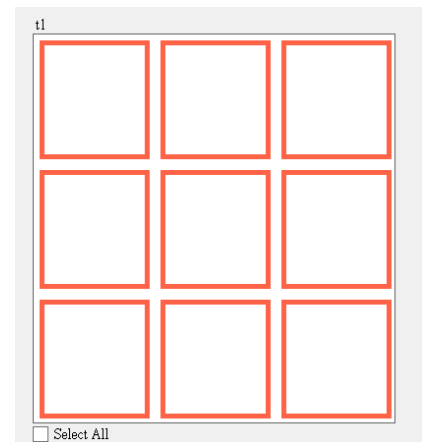
 to enter Configuration mode, then click the grid icon  on the right-hand corner to open up a window like the following “Define a Video Wall” dialogue.

Enter “3” for both Column and Row. A 3x3 video-wall will be created, then you can drag-and-drop the Rx icons into their corresponding positions.

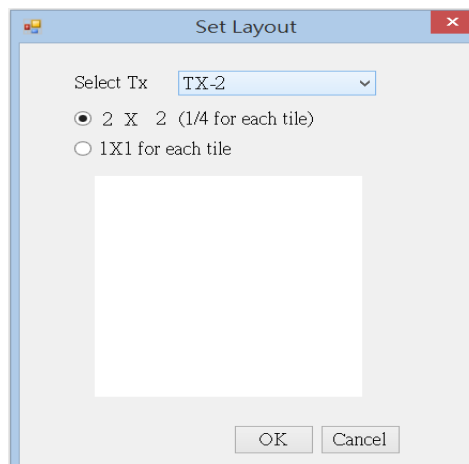
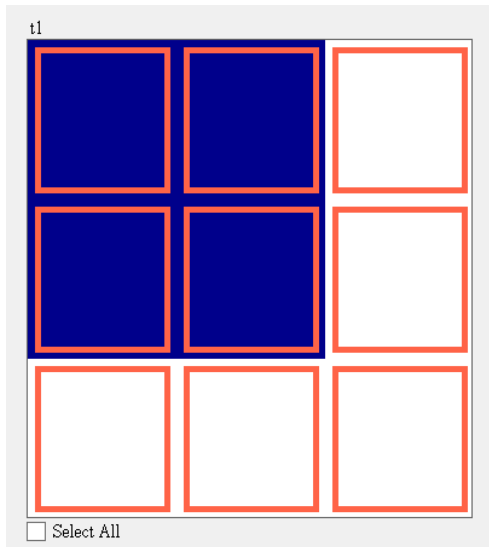


# Video-Wall Operation

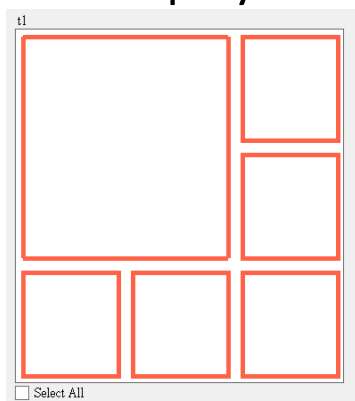
Click the wand icon  to enter Operation mode; the video wall icons show up as in the right-hand picture. In this example, each square represents an Rx unit, with each Rx showing the complete screen of one Tx source, the amber color representing that specific Tx source. Let's change that.



For example, let's make the four Rx units in the upper-left corner show one big screen, with each Rx showing one-fourth of the source. The first thing to do is to multi-select the four squares; hold <Ctrl> and click the four squares, and the video wall icons will be like the picture below, left.



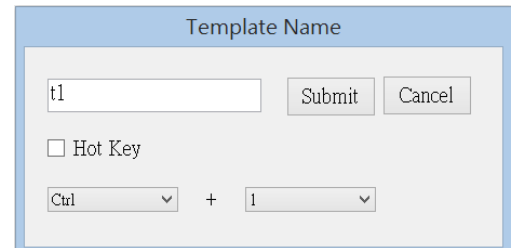
Next, right-click to get a “Set Layout” pop-up window (above, right). Select the source from the "Select Tx" drop-down menu, and click on the first option below “2X2 (1/4 for each tile)”, and click “OK”. In a moment, the video wall turns into the layout shown below. Each of the corresponding monitors should display one-fourth of the source as expected.



Similarly, to make each of the four Rx show 1x1 of the source, just follow the same procedure, but this time, select “1X1 for each tile” in the “Set Layout” window.

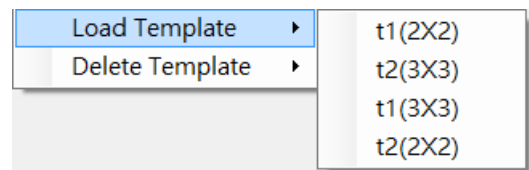
## Save Video-Wall Template

After a video wall layout is done, give it a name and save it so that you don't have to re-create it again. When you are satisfied with a video-wall layout, right-click on the margin and select “Save this Template” or “Save as a new Template”; these two options will give you a pop-up window. Type in a name for the template, and if desired, set a hot key.




## Load Video-Wall Template

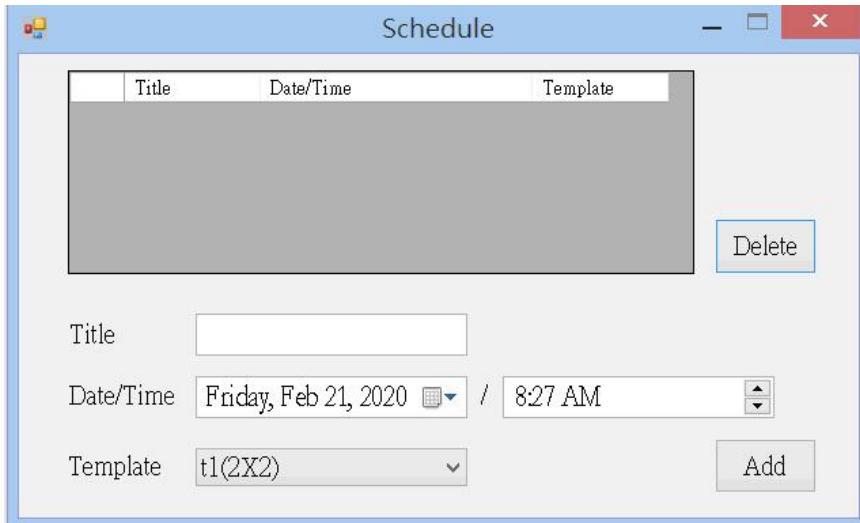
To load a previously defined template, right-click on the margin of an existing template, and select from the sub-menu items that appear.



If you have assigned any hot keys to templates, simply hit a hot key combo to load the desired template.


## Scheduling a Video-Wall Template

In the upper-right corner, there is a button . Click on the button to get a pop-up window to manage schedules for templates.



Scheduling enables you to program template display times. As the dialog box above, to add a schedule, just type in a name for “Title”, select date and time you wish it to perform, and select a template from the drop-down list. When you click “Add”, an entry will be added to the schedule list.

## Setting a Rx as a Controller

In addition to working as a part of a video wall, a Rx unit can also be a controller, which allows the user to control the connected Tx through keyboard/mouse. You can change the role of a Rx by right-clicking on the icon in the configuration mode, and selecting “Set as Controller”. In a couple of seconds, the icon will change to: 

A Rx controller has an advantage that a regular receiver does not have: you can switch the controller’s Tx connection in Operation Mode, while for the normal receiver to switch to another Tx, it must be in a video wall.

## Clockwise Rotate (x°)



Select Clockwise Rotate and desired number of degrees.  
Graphic above.

## Stretch Type:

Fit In: make the full screen fit into to the assigned area.

Stretch Out: keep picture aspect ratio and stretch out beyond the screen(s) if needed.

## UDP API

The KVM over IP Video-Wall Manager Plus supports UDP API commands for integrating with third-party systems, such as the Crestron CMS system. This integration provides a user-friendly environment by switching the Video-Wall mode on the Crestron console (PC or iPad) with a single touch or click of a icon are shown below.

