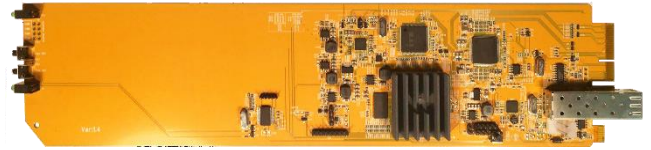


KVM Extender *over* IP for OpenGear

Features

- OpenGear 3.0/X card-based form factor
- Dashboard control enabled
- 10 cards can fit into an openGear OG-X frame
- Based on Gigabit Ethernet, outputs both copper or fiber
- Multi-mode Fiber - support up to 550m (OM2/OM3)
- Single-mode Fiber - Supports up to 10 km
- Copper - 170 meters point to point extension with CAT6 cable
- Copper - 100 meters when used with a GigE switch
- Supports point-to-point **Unicast**, multi-to-multi **Multicast**
- Perform similarly to an expandable KVM switch when bundled with a GigE switch
- Supports bi-directional stereo audio; embedded HD and external stereo input
- Supports RS-232 communication between Tx and Rx
- Built-in webpage for configuration
- Connection manager software for Tx/Rx management
- Supports resolutions up to 3840x2160@30Hz
- Advanced EDID management functionality, built-in EDID, EDID pass through, copy EDID and sharing EDID
- Built-in scaler on the receiver for Video-Wall
- Plug and play and hot swappable cards



Models		OG-KM-IP-Tx
Video	Input	HD
	Output	HD Loop out + SFP (Fiber or copper)
Audio	Input	2 of the 4 pin phoenix connector
	Output	2 of the 4 pin phoenix connector
USB	Tx Side	USB Type B (Female)
System Link	Output	SFP (Fiber or copper)
RS-232 Baud Rate		2 of the 4-pin Phoenix connector up to 115,200 bps, full duplex
Video Resolution		Up to 3840x2160@30Hz
Interconnect Cable		Standard CAT6/CAT6a/CAT7 network cable, single mode fiber or multi-mode fiber (OM2/OM3)
Maximum Copper Cable Length		170m point-to-point, 100m when connected to a switch
Maximum Fiber Cable Length		10 km on Single mode, 550m on multi-mode cables

Rear Module (2 slots)	
1 x HD input	
1 x HD loop-out	
1 x USB to connect to computer	
1 x 4 pin for IR and RS232	
1 x 4 pin for Audio in and out	
1 x space for SFP (fiber or copper)	